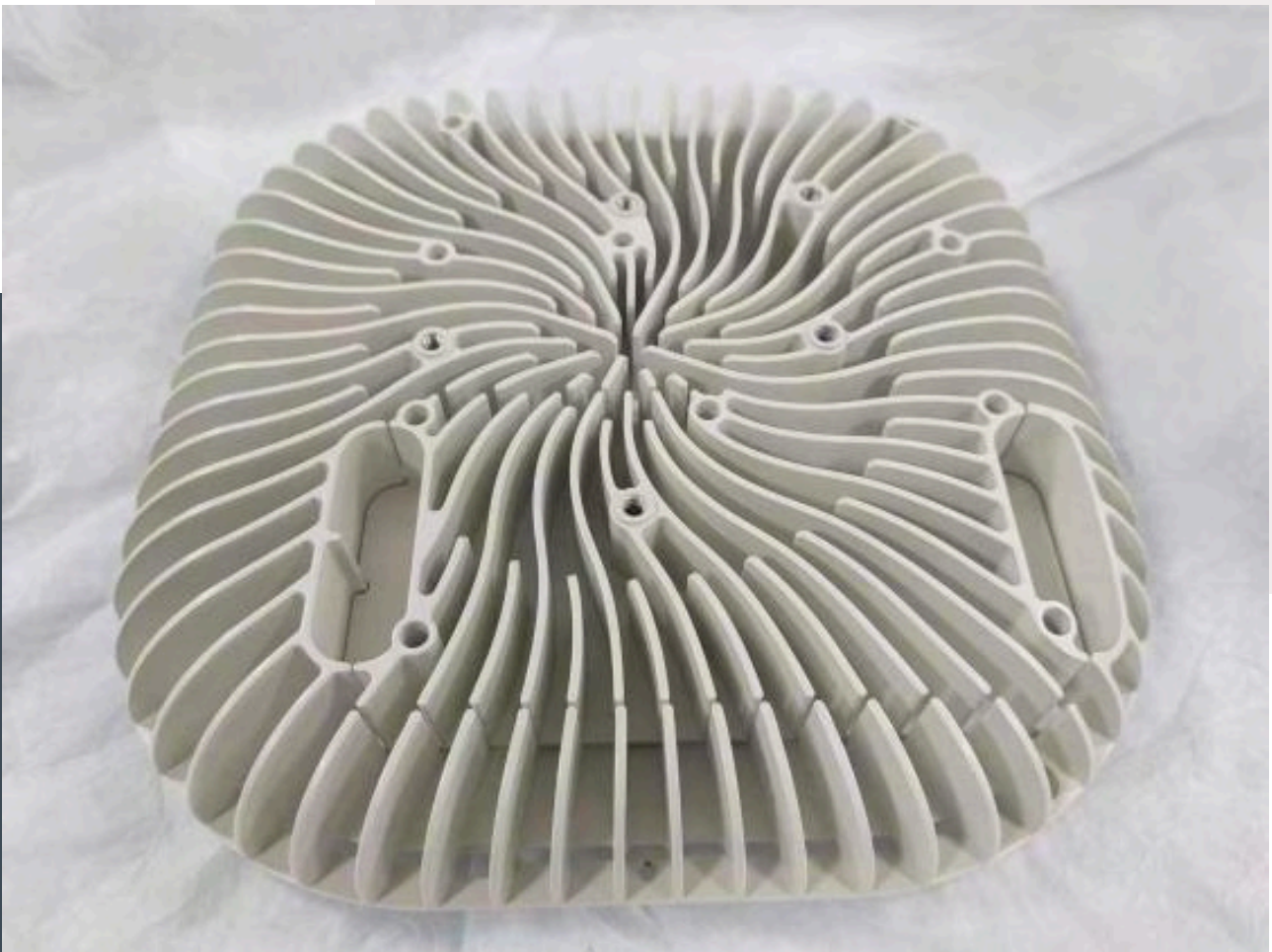


# SUPPLY CHAIN SOLUTIONS

30+ Years of Industry Insight



[www.kolojic.com](http://www.kolojic.com)

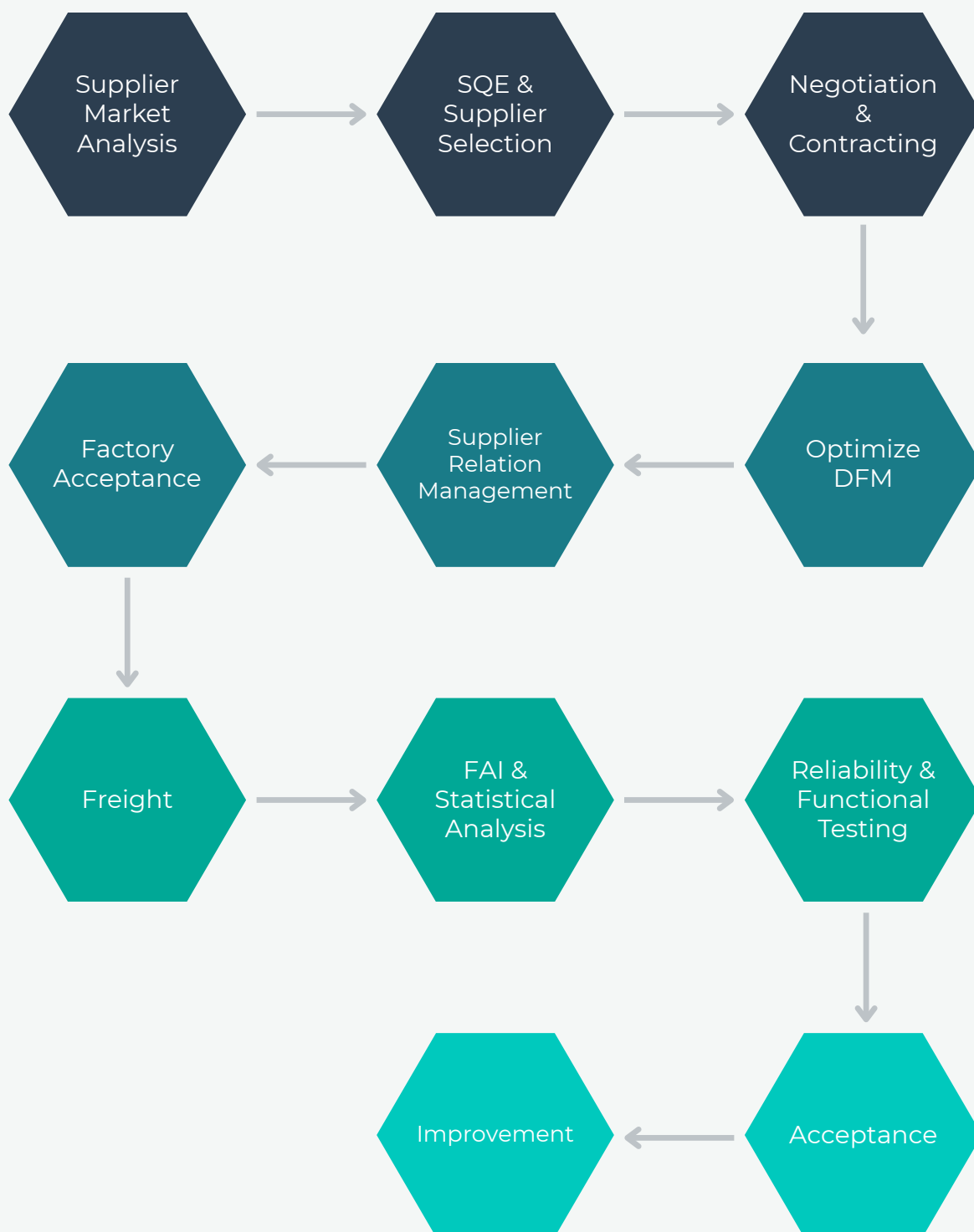


[sales@kolojic.com](mailto:sales@kolojic.com)



# 30 YEARS OF INSIGHT, ONE SEAMLESS LIFECYCLE

Turning complex ideas into successful businesses requires more than just a supplier; it requires a trusted innovation partner. Our 11-step integrated process eliminates the friction of manufacturing. By optimizing every stage from DFM to final freight, we turn your engineering challenges into your competitive advantage



# CASTING

**Precision from the First Pour** We partner with specialized facilities to eliminate common casting defects such as porosity, shrinkage, and dimensional inaccuracy. By delivering precision-engineered, high-quality castings, we ensure consistent performance and on-time delivery for all type of demanding industries



## TELECOM HEATSINK

Material: Aluminium

Machine: 1600T

Dimension: 570x349x145 mm

Finishing: Powder Coating

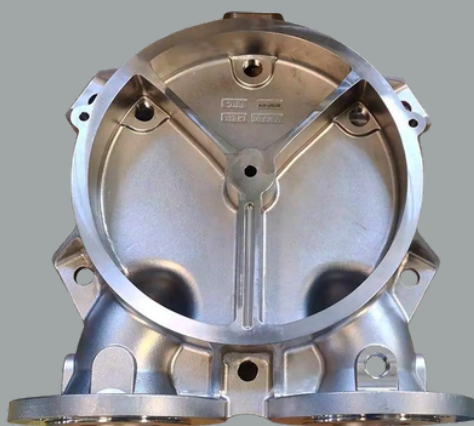
## HEAD FOR OIL FILTER

Material: Alloy

Type: Sand Casting

Dimension: 90x90

Finishing: Black Phosphating



## PUMP HOUSING

Material: Stainless Steel 316

Type: Casting

Weight: 28 kg

Heat Treatment: Annealing + Sol

# MACHINING

**KOLOJIC**  
VISION TO VENTURE

**Complexity Mastered** Achieve excellent results for parts requiring tight tolerances, complex geometries, and superior surface finishes. Utilizing advanced precision equipment and proven quality processes, we tackle high-stakes projects, including satellite telecom plates to thin-walled outdoor housings and hydraulic manifolds



## HEATSINK

Material: Aluminium

Space b/w fins: 3mm

Max depth of fins: 35mm

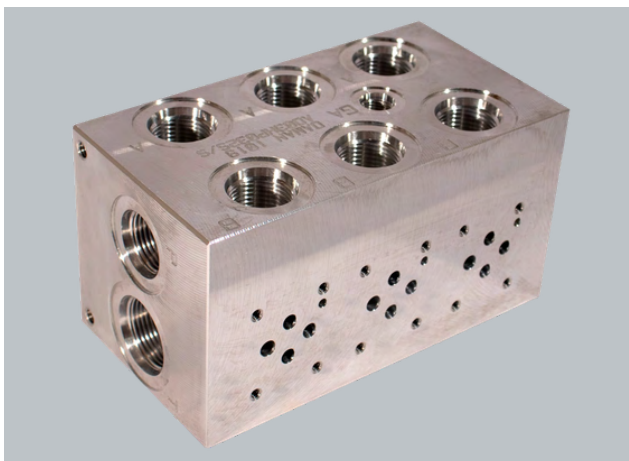
Dimension: 275x275x54 mm

## SATELLITE COMM. PLATE

Material: AL7075

Dimension: 1016x750x18 mm

High Tolerance



## HYDRAULIC MANIFOLD

Material: 6061-T6

5-Axis Machining + Deep Drilling

Complex internal paths

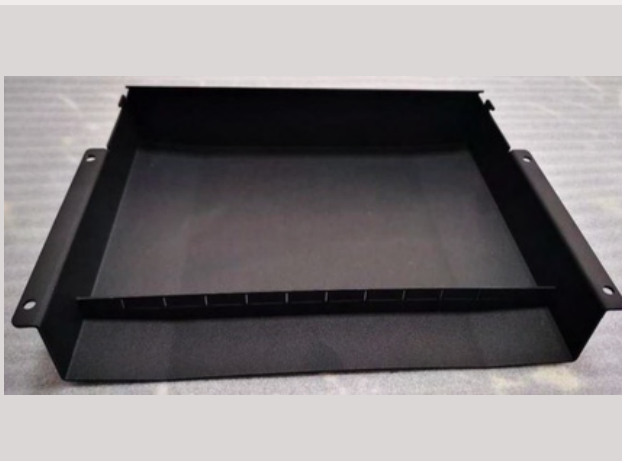
 [sales@kolojic.com](mailto:sales@kolojic.com)

 [www.kolojic.com](http://www.kolojic.com)

 United Kingdom

# SHEET METAL

**Formed with Absolute Accuracy** Leverage our trusted network and on-site support to overcome challenges like material deformation and surface finish inconsistencies. From fully welded PCBA covers with no visible joints to large-scale wall trays with 80+ defined dimensions, we deliver precise solutions every time



## PCBA COVER

Material: Stainless Steel

Finishing: Surtec 650 +  
Powder Coat

Dimension: 294x208x51 mm

Fully Welded - No Visible Joints

## WALL TRAY

Material: Stainless Steel

Dimension: 592x360x26 mm

84 Dimensions Defined

Finishing: Zinc Plating +  
Powder Coating



## RACK MOUNT ENCLOSURE

Material: Aluminium

PEM Inserts & Precision Bends

Seamless Joints

# TURNING PARTS KOLOJIC VISION TO VENTURE

**High-Precision Rotational Engineering** We solve typical turning challenges—such as chatter marks, concentricity errors, and inconsistent finishes—through deep industry experience and close quality oversight. Our partners deliver dependable results for complicated gears and stainless steel components with tolerances as tight as 0.005mm



## GEAR

Tolerance: 0.005 mm

Precision Cut

Premium Alloy

High Durability

## MOUNT

Material: Stainless Steel

Rotating mount

Finished surface

Precision cut



## HYDRAULIC PISTON

Material: Case-Hardened SST

Tolerance: 0.01 mm dimensional accuracy

Finishing: Mirror polish

# PLASTIC PARTS

**KOLOJIC**  
VISION TO VENTURE

**Durable Design, Perfect Finish** Partner with KOLOJIC to eliminate warping, sink marks, and poor dimensional control in injection moulding and vacuum forming. Whether it is large-scale telecom radomes or complex housings, we ensure consistent material integrity and surface quality



## EV CHARGER ENCLOSURE

PVC Plastic  
High Durability  
IP65 Protected

## RADOME

Material: Sabic Lexan 9330  
Dimension: 570x342x165 mm  
Injection Moulding  
Machine 1200T



## PC CAMERA COVER

Material: Optical Grade  
Polycarbonate  
Process: Precision Injection  
Moulding  
Zero-Defect Surface Visibility &  
UV Resistance

 [sales@kolojic.com](mailto:sales@kolojic.com)

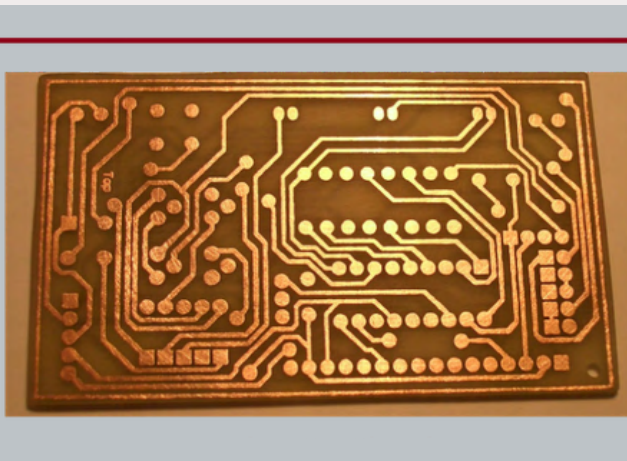
 [www.kolojic.com](http://www.kolojic.com)

 United Kingdom

# PCB & PCBA

**KOLOJIC**  
VISION TO VENTURE

**Advanced Electronic Integration** Overcome electronics manufacturing hurdles like signal integrity loss, solder bridging, and thermal mismanagement. We specialize in high-density interconnect (HDI) and surface-mount technology (SMT) to deliver reliable, high-performance circuits for any application

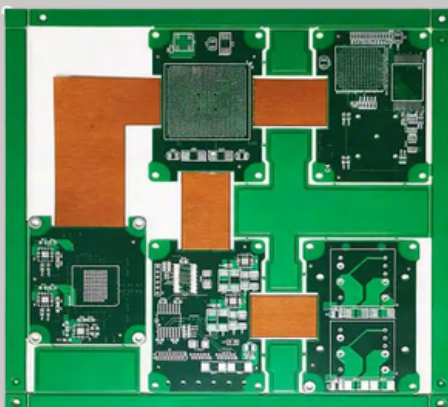


## PCB BOARD

Material: High Grade FR-4  
Controlled dielectric constants  
2oz finished copper  
Lead-Free HASL

## PCBA CIRCUIT

High Precision SMT  
3D Automated Optical Inspection  
Injection Moulding  
Functional Circuit Tested



## MULTI-LAYER HDI RIGID-FLEX CIRCUIT

8 Layers High-Density Interconnect (HDI)  
Plate Thickness: 1.2 mm  
0.5 and 1 OZ Copper Finishing

# CABLES & HARNESS

KOLOJIC  
VISION TO VENTURE

**Reliable Connectivity Under Stress** Our technical expertise and on-site quality assurance ensure your assemblies are free from signal loss, connector mismatches, or inconsistent lengths. We provide cost-effective, high-performance solutions for RF testing and complex harness assemblies



## RF TESTING CABLES

Material: Pure Copper

Frequency: DC-4000Mhz

IP67 Protected

High Insulation

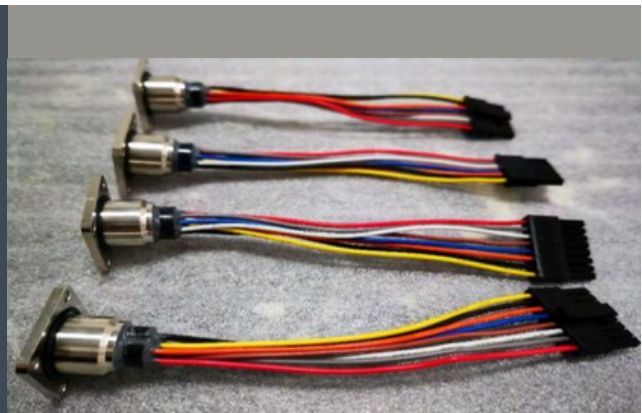
## ANTENNA HARNESS

8-wires harness

Metal & Plastic Connectors

High grade insulation

Customized connectors



## OVERMOLDED CABLE

High current power

IP67 Protection

Continuity and Signal Integrity Testing

# YOUR EYES ON THE GROUND: GLOBAL QUALITY, LOCAL OVERSIGHT

Eliminating Risk through 30+ Years of Technical Insight

Managing remote vendors often leads to quality gaps and delivery delays. KOLOJIC provides dedicated 3rd-party Quality Control and Audit services to bridge that gap. We work directly on the factory floor to ensure your standards are met before the product ever leaves the dock



## Supplier Performance

**Improvement:** Proactive coaching to resolve recurring defects

## 100% Material Sorting:

Ensuring only defect-free components reach your assembly line.

## Pre-Shipment Inspection:

Rigorous final checks to guarantee order accuracy and quality.

## Comprehensive Quality

**Audits:** Evaluating supplier systems to ensure long-term reliability

# KOLOJIC

VISION TO VENTURE

## TURNING YOUR IDEAS INTO A BUSINESS

Ready to scale globally with a trusted innovation partner? Let's discuss your next project.



[sales@kolojic.com](mailto:sales@kolojic.com)



[www.kolojic.com](http://www.kolojic.com)



United Kingdom